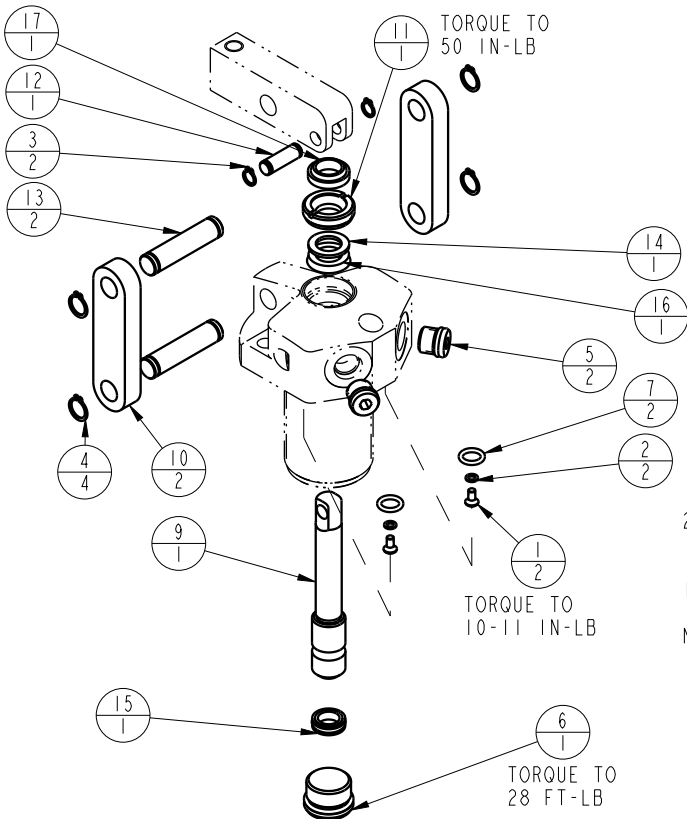


1				2	
MODEL NO.		MODEL NAME			
16620600		ASSY, LC, DA, 1100			
NO.	QTY	PART NO.	DESCRIPTION	STD SEAL KIT	FKM SEAL KIT
1	2	21500019	SCREW, CAP, BTNH, M3 X 6, ALY		
2	2	21500200	WASHER		
3	2	23050021	RING, RTNG, EXT, 0.250	X	X
4	4	23050022	RING, RTNG, EXT, 0.375	X	X
5	2	30601144	PLUG, SOCH, SAE 4		
6	1	30670002	PLUG, SAE 8, FKM	X	X
7	2	39050042	O-RING, (-011)	X	39051025
8	1	67040065	TAG, LINK ASSY, LC		
9	1	81600007	PLUNGER, LC, DA, 1100/5 KN		
10	2	81600022	LINK, LC, 1100 1b		
11	1	81600037	RETAINER, LC, 1100		
12	1	81600077	PIN, LC, SHORT, 1100		
13	2	81600082	PIN, LC, LONG, 1100		
14	1	39F54006	BU RING, (-205)	X	X
15	1	39H10037	SEAL, T, (3/8 X 5/32 X 9/16)	X	39V10037
16	1	39H52040	SEAL, BEVEL, 7/16 x 1/8 x 11/16	X	39V52032
17	1	39V53026	WIPER, SNAP-IN, (7/16)	X	X
N/A	N/A	6V160002	KIT, SEAL, LC, 1100/5 KN, FKM (for date code before 33/06)		
N/A	N/A	6V160010	KIT, SEAL, LC, 1100/5 KN, FKM (for date code after 33/06)		NOTED
N/A	N/A	60160002	KIT, SEAL, LC, 1100/5KN	NOTED	



2. ALL SEALS, BU RINGS, RETAINING RINGS, O-RINGS, AND PLUGS ARE INCLUDED IN THE SEAL KIT.

1. APPLY LUBRICANT TO ALL SEALS PRIOR TO ASSEMBLY.

NOTE:

### PARTS LIST



VEKTEK, INC.  
1334 E. SIXTH AVE. P.O. BOX 625  
EMPORIA, KS. 66801 U.S.A.

ASSEMBLIES AFFECTED  
16620600

PARTS LIST, LC, DA, 1100

G	5718	RELEASE	NPETERS	6/9/25
REV	IN ACCORDANCE WITH ECN	EFFECTIVE DATE	REVISED BY	DATE
DRW BY:	K. ROEMER	<b>DRAWING STATUS: Released</b>		
DATE:	07/30/04	PRODUCTION APPROVED FOR RELEASED STATUS ONLY		

SIZE  
A  
PL1602

REV  
G

FORM FEG035\_PL\_ASIZE, REV. B

SHEET 1 OF 1